

## Teignmouth Lighthouse and navigation into the port



Teignmouth Lighthouse is located at the end of the promenade.

From "Devonshire" by J.S.Curtis, published in 1896:

*"The Den or Dene, a magnificent esplanade on which the Assembly Rooms stand, runs parallel with the sea and affords a fine promenade half a mile in length. Its turf is maintained in excellent condition and it is a great resort of visitors."*

*"This Den or Dene is really a huge sand bank caused by the shifting bar of the Teign, at the end of which there is a lighthouse for the guidance of vessels entering the river."*

The Port of Teignmouth was quite small until c.1843 when a new canal - Hackney Cut - was built for clay barges requiring access to the clay mining area around Kingsteignton. This clay was then moved to Teignmouth for onward travel to areas in the UK and abroad.

What is now a popular seaside resort, Teignmouth, was a fishing port and trade was generated from this activity including the opening of the South Devon Railway in 1846. Until 1852 Teignmouth was associated as part of the Port of Exeter, but from that time it came under independent operation.

The entrance into the port is dangerous with difficult currents, rocks and a shifting sand bar.



Night time view of the lighthouse

It was determined that to help improve trade and navigation into Teignmouth Port, two leading lights were built in 1845. At 6 metres (approx. 20ft) tall the front range light was built of local grey sandstone and has a blue lantern on top. The Earl of Devon assisted with the costs of this tower which was around £196 7s.

The lighthouse was lit using three gas burners with reflectors and displays a fixed red light.

The rear range light is around 100 feet away and has a fixed red light on a street pole in front of houses on Powderham Terrace. At around 37 feet high it is known as the Back Light and assists vessels in clearing the Ness Rocks. The light itself is visible for around 6 miles and is maintained and operated by Teignmouth Port Authority.

Larger incoming vessels must line up this light with that coming from the lighthouse - only then is it safe to make the turn into the mouth of the river.



Navigation lights for Teignmouth Harbour



View from atop the Ness with the Back Light noted

On the Ness headland a sector light guides vessels into the river entrance. This is a 15 feet high metal white column and is located on the training wall to the southern side of the entrance to the river.

This is the Philip Lucette Beacon and marks the dredged channel when lined up with a red beacon.



Lucette Beacon

At the entrance to the harbour there is a green lattice steel tower called Point Light, displaying an occulting green light.



Point Light



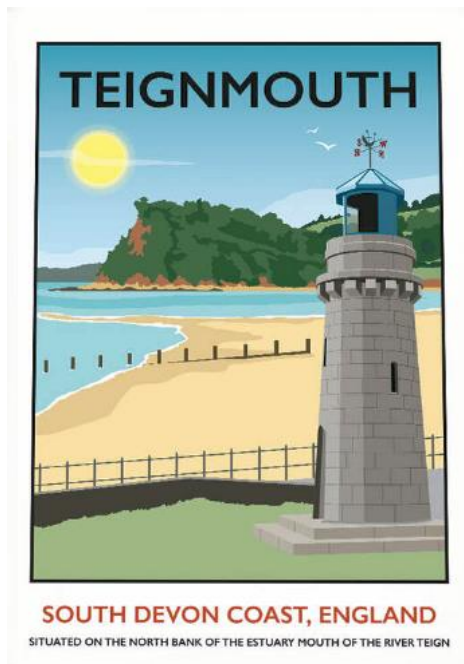
Shaldon side, view of the Lucette Beacon

Not everyone liked the idea of a lighthouse. Someone unkindly said the "the feeble glare emitted from the lantern is of no service by night, except it be to light the fishes to their sandy beds." An Admiralty investigation soon dispelled this local criticism and this little lighthouse still performs its task of guiding incoming vessels to safe passage through the channel to the safety of the harbour beyond.

Heritage Category: Listed Building; Grade: II; Date first listed: 30-Jun-1949



1800's view along the promenade showing the lighthouse.



The Lighthouse used in an advertising poster for the resort.

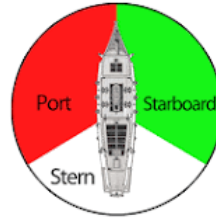


The Back Light location.

© Google

## Navigation Guidance

We have seen footage shot by Adam on board some of the large ships that come into Teignmouth Port so here is what all those buoys and other floaty things in the Teign estuary actually mean .....



For the land-lubbers amongst us .....



Transit marks E/W channel across the bar.

The red port hand and green starboard hand buoy mark the outer entrance to the channel



From 4 cables ENE of the Ness proceed to position to pick up transit between Lucette Light Beacon (Oc.R.6s4m3M) and the vertical white stripe painted on the sea wall or two vertical red lights for night. (264°/084°T)



Once on transit leave the Spratt Sands Green buoy (Fl G 2s) to starboard.

Leave Ness Rocks port Red can buoy (Fl R 2s) to port



Leave Inner Spratt Sands Green (Fl g 2s) to starboard



Leave Point light beacon (occ G 6S and FG) to starboard



Turn to starboard leaving Lower Salty red (Fl R 2s) to port



Slip buoy to starboard

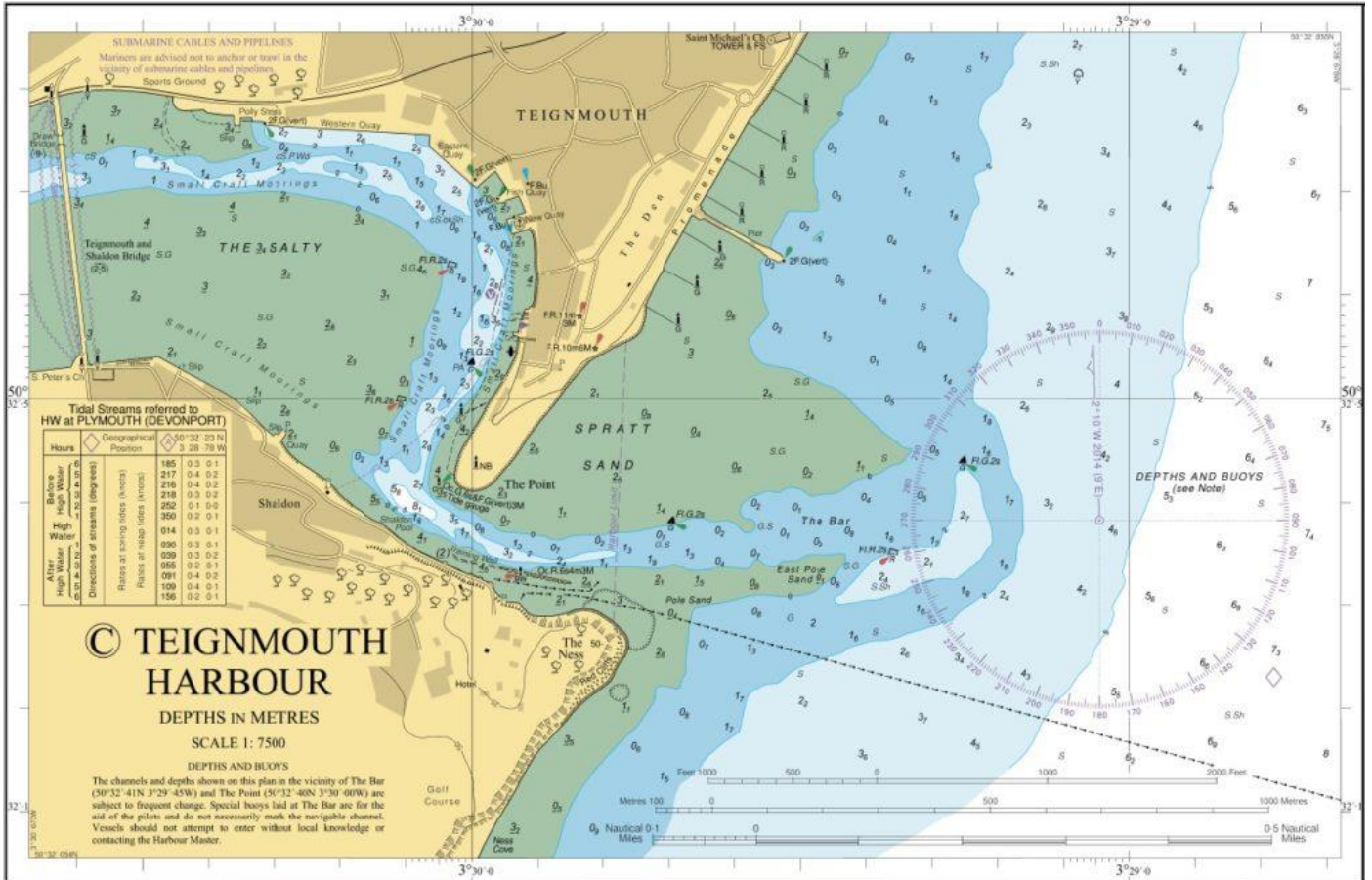
Follow the channel between Point and Salty bank – leaving Lifeboat



Trafalgar Pontoon



Jubilee Pontoon



This map is for illustration purposes only. **Do not use for navigation.**

Navigation information courtesy of:

Teignmouth Harbour Commission,  
 2nd Floor, ABP Port Office,  
 Old Quay Road, Teignmouth,  
 Devon, TQ14 8ES

