

Reference used: Exeter-Newton Abbot A Railway History by Peter Kays

Timeline

1849 First siding laid.

1849-57 Various additional sidings laid.

1857 Auction to purchase Old Quay and sidings.

1886-1896 Eastern and Western Quays built

1896-1960 Regular working in the Quays with clay loading and coal unloading as main work.

1931 The Elephant arrived! Principally to help shunt wagons to around 1963 when she passed through several owners and ended up in the Netherlands.

1967 BR terminates siding agreement.

1968 Sidings removed.

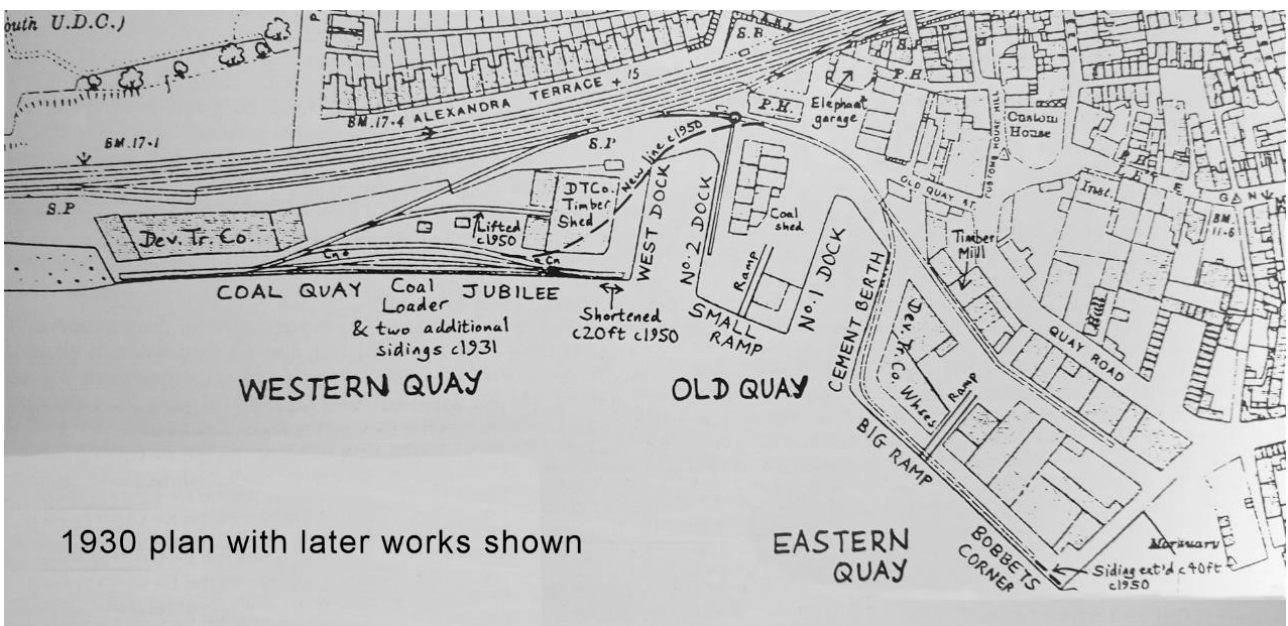
1970's Coal imports into Teignmouth stopped.

1985 Old Quay pub demolished.

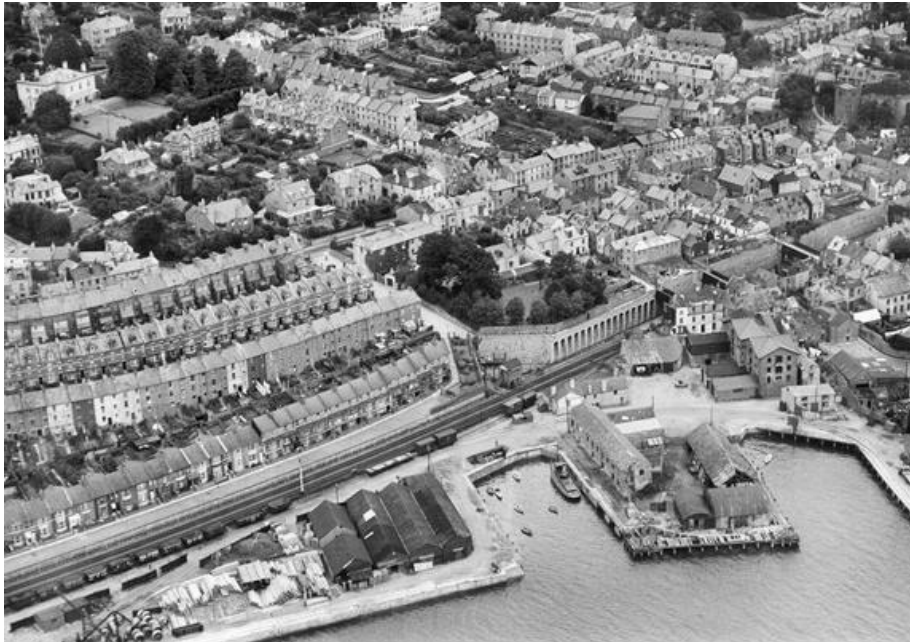
1988 – to date Associated British Ports take control of the Quays

General notes:

In the 1970's and '80's with no rails a large increase in the traffic passing through took place, with animal feed, plasterboard and paper being the main cargos. From 1968 the Quay company was owned by United Builders from Bristol but in 1979 was returned to local ownership. Some modernization took place with an office building replacing the Old Quay pub. There was a proposal to extend the Western Quay towards Shaldon Bridge in 1988 but was blocked by Parliament following environmental concerns. With the demise of Exmouth docks in 1989, Teignmouth became **the** port of South Devon.



Credit: Peter May



1930's aerial shot

Image Copyright Historic England



The Elephant

Credit: The Peter May collection



Quays 2023

Taken from your drone flight 2023 the basic area of the quays has not changed in over 120 years!

PORT OF TEIGNMOUTH, SOUTH DEVON.

The Particulars and Conditions of Sale

OF
THE IMPORTANT PROPERTY.
COMPRISING

THE OLD QUAY,

CONTAINING NEARLY AN ACRE OF LAND,

ABUTTING ON THE RIVER TEIGN,

Which has for many years commanded the Chief Trade of the Port, together with the Valuable Works attached, including

THE TRAMWAYS AND LINES OF RAILS

Round and across the same, connected with the Teignmouth Station of the South Devon Railway,

THERE ARE ON THE QUAY,

Two Cranes to lift 4 tons each, Three Turn Tables, expensively constructed Weighing Bridge, numerous Buildings, comprising Stores, Workshops, Lime Kilns, Licensed Public House, and Coal Yard, and adjoining are some Freehold Workmen's Dwellings, and a Limestone Quarry at Stoney Combe, connected with the Railway, and a Siding and Stores at St. Thomas's, Exeter, with a Weigh Bridge for 20 Tons.

The Sale of this Property presents an unusually desirable opportunity to establish a
Company with Limited Liability and Moderate Capital,

To profitably carry on the Trade and Chief Traffic of Teignmouth, as Merchandise may be Landed at this Port, and conveyed to Exeter and its Neighbourhood, far cheaper than by any other Route, and at the same time secure the important Traffic from Newton, Ashburton, and the Mining and Pottery Districts:

THE

FREEHOLD BONDED WAREHOUSES,
SITUATE ADJOINING THE QUAY.

A substantial and neat structure of Four Stories, the Ground Floor being Kiss Proof with Eleven Landing Stages, Four Powerful Iron Cranes, &c.:

CAPITAL FREEHOLD RESIDENCE,
Known as "**THE NEW INN,**"

Facing the Quay, containing Fifteen Rooms; also

A FREEHOLD PLANTATION,

AT

KINGSKERSWELL, adjoining the **SOUTH DEVON RAILWAY,**

Composed of Limestone; and

FIVE COTTAGES, Newly Built of Stone, and Tiled,

ALSO

FORTY-NINE CAPITAL RAILWAY TRUCKS,

For the Broad Gauge, from Five to Eight Tons each, many of which are nearly new, and contain all the Modern Improvements,

Which will be Sold by Auction, by

MESSRS.

CHINNOCK & GALSWORDY

AT YEALE'S ROYAL HOTEL, TEIGNMOUTH.

On **WEDNESDAY, JULY 29th, 1857,** at Two o'clock,

IN LOTS, BY DIRECTION OF THE MORTGAGEES.

Sale of Quay notice from 1857



Images 1 & 2 views of the Quay area around 1894 both probably taken the same day.

Credit: E M Whitaker collection

[Both of these are very atmospheric and remind me of pictures from Whitby taken by Frank Meadow Sutcliffe, a noted photographer. I have been in his gallery/shop in Whitby and the images are outstanding. I attach one here solely for your reference]



Whitby. Copyright Frank Meadow Sutcliffe

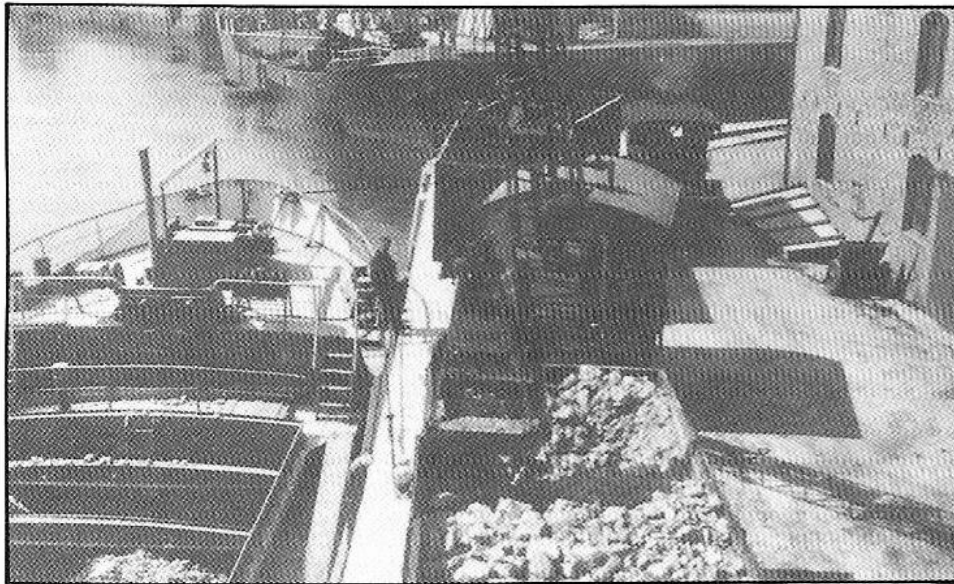


Image 3. Copyright Teignmouth Quay Company

Image 3 1950's Shows clay being unloaded from rail wagons at the big ramp into onward sea transport. The 'elephant' in attendance to assist with wagon moving.

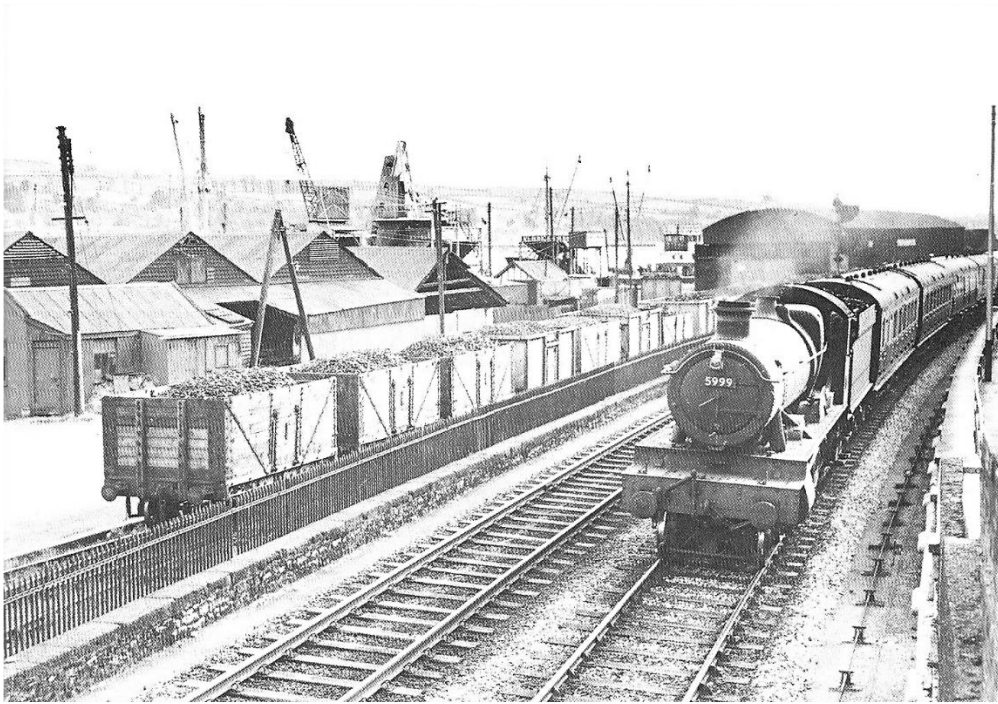


Image 4 Copyright R C Riley

Image 4 July 1958 shows 5999 Wollaton Hall with an up passenger train passing the transfer sidings loaded up with around 40 coal wagons. Plenty of crane power can be seen in the distance by the riverside.



Image 5 Copyright R C Riley

Image 5 1958 Shows the down Torbay Express - 5032 Usk Castle - passing the Quay signal box.

[The arches are the ones featured in your postcard then and now in the daily video on 26/03/24.]

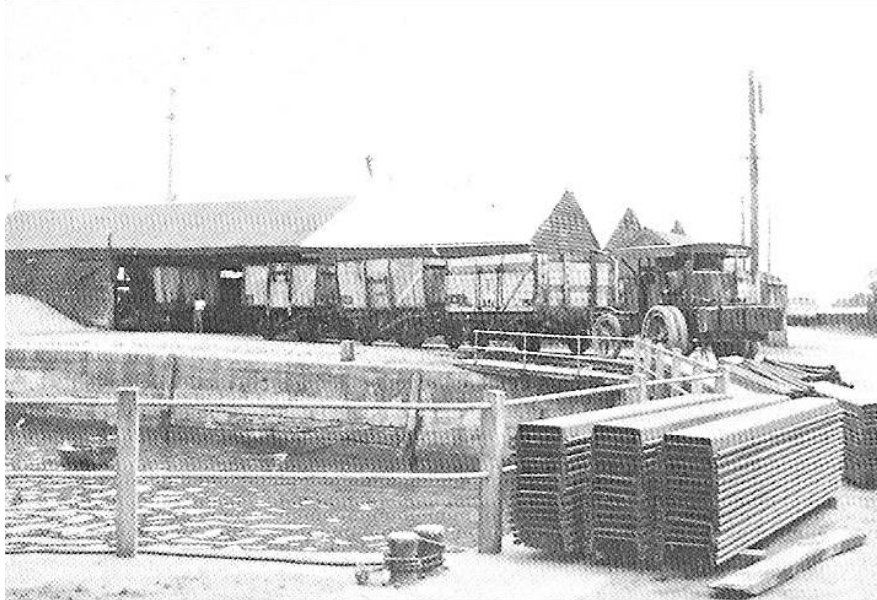


Image 6 Credit: The Peter May collection

Image 6 1961 Shows the 'elephant' moving some wagons to the loader via the timber shed, the elephant itself could not pass through the shed so the wagons were pulled through by an electric capstan. The facing sheets in the foreground were installed in 1961.

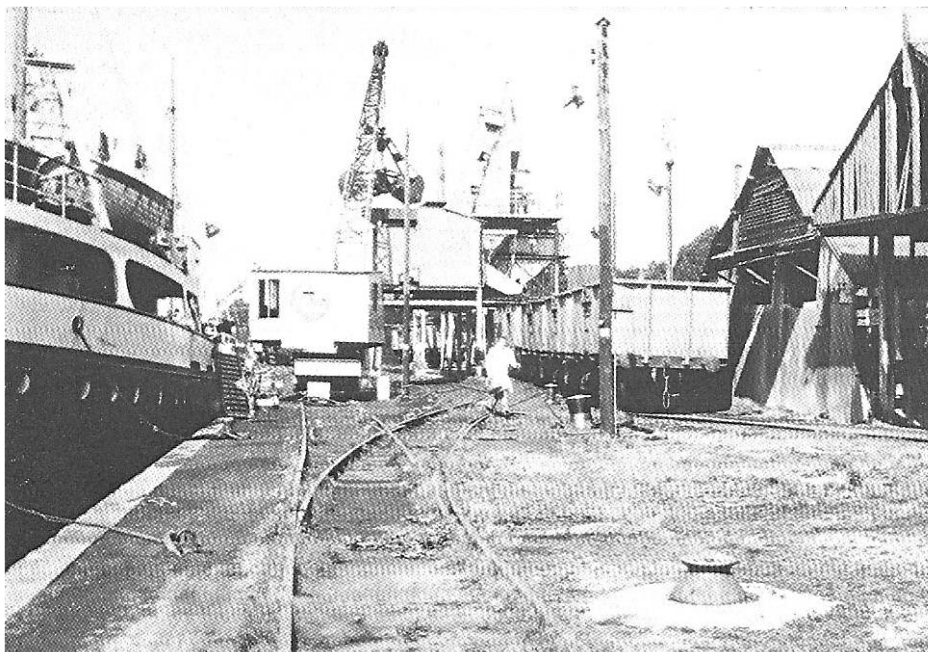


Image 7 Credit: The Peter May collection

Image 7 1961 A view of the coal quay looking west. Coal is being loaded into the Grader/Loader ready for distribution either for domestic coal supplies or slack coal for Newton Abbot power station. The electric capstan can be seen at the base of the pole in the centre of the image.

[The **Newton Abbot power station** was a [power station](#) originally built in 1898 at Jetty Marsh, [Newton Abbot](#) as a small station to serve the local community. It was subsequently significantly expanded, and changed from [direct current](#) to [alternating current](#) when bought by the [Torquay](#) corporation in the 1920s to provide power across a wider area towards the coast.

It reached its peak capacity of 52.5 [megawatts](#) in 1948 - the same year that it was nationalised. The station was used less from the mid-1960s as more efficient plant was used via the national grid, and it was finally closed in 1974 with demolition following shortly after. The site is now a housing estate. Courtesy of Wikipedia]

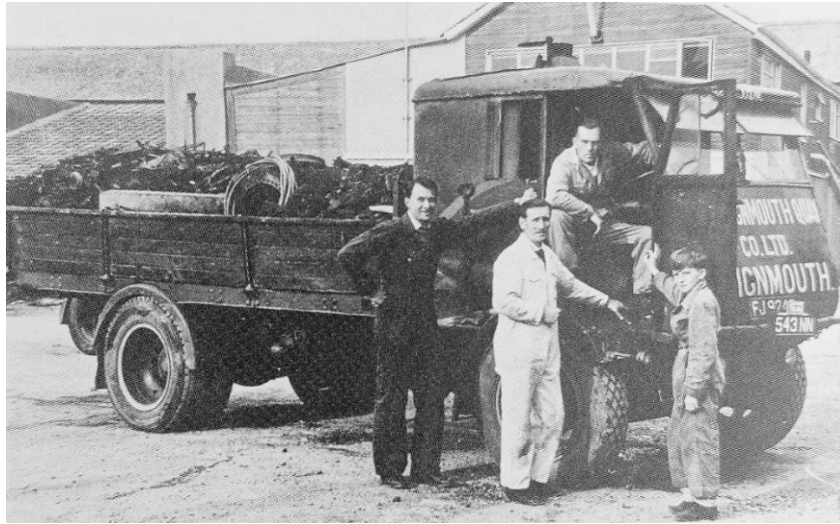


Image 8 Copyright Teignmouth Quay Company

Image 8 1964 Nicknamed 'The Lion' this 1933 Sentinel S4 steam lorry was used around the quays for shunting when the 'elephant' was not available. It was also used for local road trips.

Teignmouth Gas Works Siding



Image 9 Teignmouth Gas Works 1928

Image 9 Copyright Historic England

Located about a mile from the town to the west and established in 1840. Siding laid in 1925 and would accommodate around 6 wagons. Used into the 1950's it was closed by South Western Gas Board in 1956. Siding was disconnected from the mainline and lifted early 1960's. Area is now a boatyard/builders and the area with the gasometer is now an industrial estate with Morrisons superstore close by.



Taken from your drone flight 2023